

Grand Baxter Stone™



Grand Baxter Stone™

Storm Water Management

Signature Curved Edges

Grand Baxter Stone™ has larger stone sizing, a texture of natural stone, and a curved edge. This versatile 3-piece system can also be installed as a permeable system for storm water management.

For additional traditional laying style options, combine with Baxter Stone® or Baxter Stone® Circle.

- ✓ **Walkway**
- ✓ **Patio**



PRODUCT INFORMATION

Pallet wt	2,676 lbs
Sq ft per pallet	97.35 sq ft
Layers per pallet	11
Sq ft per layer	8.85 sq ft

3-Piece System
All three sizes are together on one pallet.

Grand Baxter Stone™ is not intended for vehicular traffic.



UNIT DIMENSIONS



Height	2 3/8" (60 mm)
Width	11" (280 mm)
Length	5 1/2" (140 mm)
Units/Pallet	44
Units/Layer	4
Units/Sq ft	2.38
Sq ft/Unit	.42



Height	2 3/8" (60 mm)
Width	11" (280 mm)
Length	11" (280 mm)
Units/Pallet	44
Units/Layer	4
Units/Sq ft	1.19
Sq ft/Unit	.84

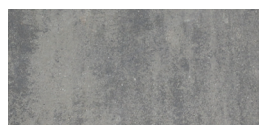


Height	2 3/8" (60 mm)
Width	11" (280 mm)
Length	16 1/2" (420 mm)
Units/Pallet	33
Units/Layer	3
Units/Sq ft	1.26
Sq ft/Unit	1.26

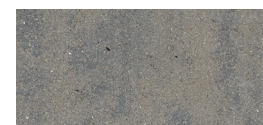


Becomes permeable when installed according to ICPI specifications for permeable pavements with open-graded base and sub-base for infiltration and storage.

COLOR OPTIONS



Granite Blend



Earth Blend

G-MIX®

