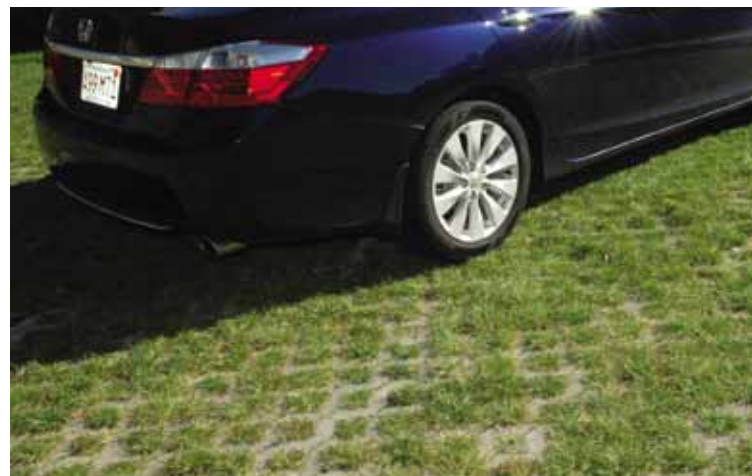


Duragreen®




Duragreen®

The open grid design of Duragreen stones makes them the natural choice for projects where erosion control, soil stabilization and the maintenance of green areas are important. Duragreen® can be used for driveways, boat ramps, lakeside stabilization and service access lanes. Topsoil and grass or aggregate can be placed in the 3" x 3" grid openings.



Color: Natural

 NOTE: Becomes permeable when installed according to ICPI specifications for permeable pavements with open-graded base and sub-base for infiltration and storage.

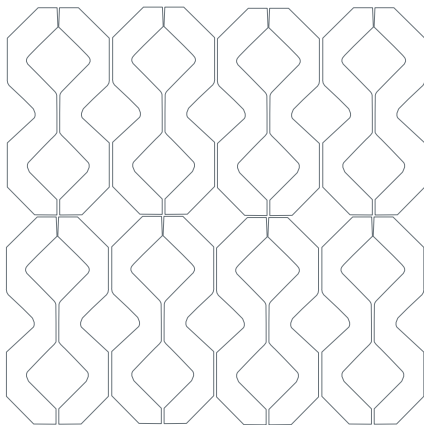
Packaging

- 72.8 sq ft per pallet
- 1,710 lbs pallet weight
- 7 layers per pallet
- 10.4 sq ft square feet per layer
- Units per layer 4 / per pallet 28

Unit Dimensions:

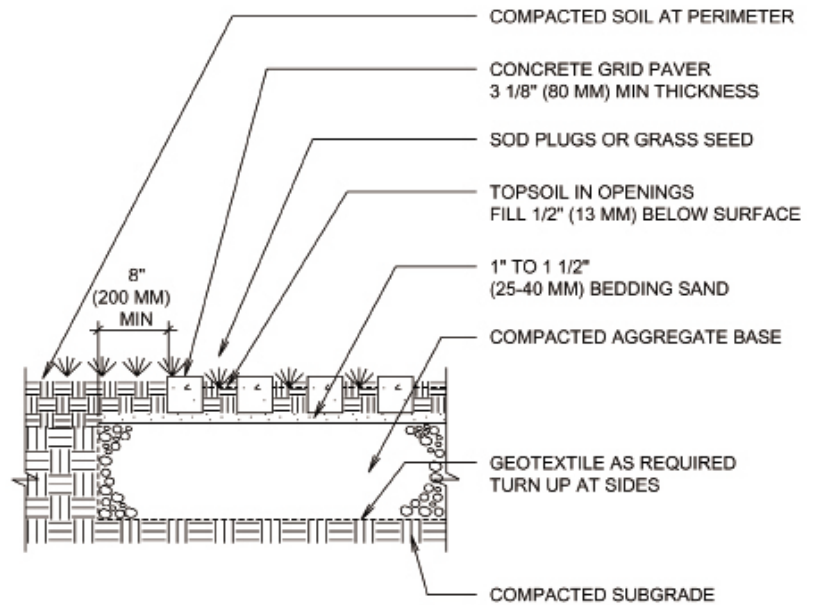
- Width 15 3/8" (390 mm)
- Length 23 3/4" (600 mm)
- Height 3 5/8" (90 mm)
- Sq/ft per unit 2.56

Laying Styles Stacked Bond



Install Duragreen with the grooved face up.

CONCRETE GRID PAVERS FIRELANE, DRIVEWAY & INTERMITTENT PARKING



NOTE:

1. Base thickness varies with traffic, climate and subgrade.
2. Minimum base thickness: 6" (150mm) residential driveways. 8" (200mm) firelanes & parking lots.

DETAIL DRAWING FROM ICPI.ORG

Duragreen meets or exceeds the industry standards including the requirements of ASTM C 1319 for concrete Grid Paving Units.

NOT COVERED BY GENEST WARRANTY



1-800-649-4773
GenestConcrete.com

